



**2012 Undergraduate College Student Exhibition**  
***The Kansas City Artists Coalition's***  
***17th Annual Student Juried Competition***  
Mallin and Jacqueline B. Charno Galleries  
201 Wyandotte, Kansas City, Missouri 64105

**Calendar**

Entries due on [www.CallForEntry.org](http://www.CallForEntry.org)

March 14 Entry submissions due at [www.CallForEntry.org](http://www.CallForEntry.org)

March 21 Notification of artists begins

April 6-7 Artwork due, 11-4pm

April 13 Exhibition is open to the public and

Opening Reception, 5-8pm

April 27 Exhibition ends

April 28 Pick up works, 11am - 4pm



**Juror**

Colby Smith, Director, The Studios, Inc.

Colby K Smith received his B.F.A. from Emporia State University, and his M.F.A. from Southern University of Illinois at Carbondale. Smith taught at both Emporia State University and Southern University of Illinois before relocating to Kansas City, Missouri, in 2002. In 2003 he opened Gallery HQ, an alternative contemporary art space that occupied two locations in the West Bottoms and in the Crossroads Gallery District. In 2004, Smith closed Gallery HQ to dedicate his time and energy to developing The Studios Inc, where he currently serves as Director, and to focus on his career as a professional artist.

Smith continues to create and exhibit multi-media work that has been featured in numerous solo and group exhibitions throughout the Midwest. In Kansas City he has exhibited at Millennial Glass, The Late Show, Society for Contemporary Photography, and The Studios Inc Exhibition Space. His work was also recently featured in the book *Glass Art International*, and it has been reviewed nationally and regionally in publications such as *Sculpture and Review*.

**Awards**

The Leigh Rosenberg Earnest Memorial Fund will award a total of \$500 in scholarship/s.

**Eligibility**

Open to currently enrolled undergraduate college students in Western Missouri and Eastern Kansas. Missouri dividing line is N-S Hwy 63. Kansas dividing line is N-S Hwy 81. Schools in towns where these highways run through are eligible.

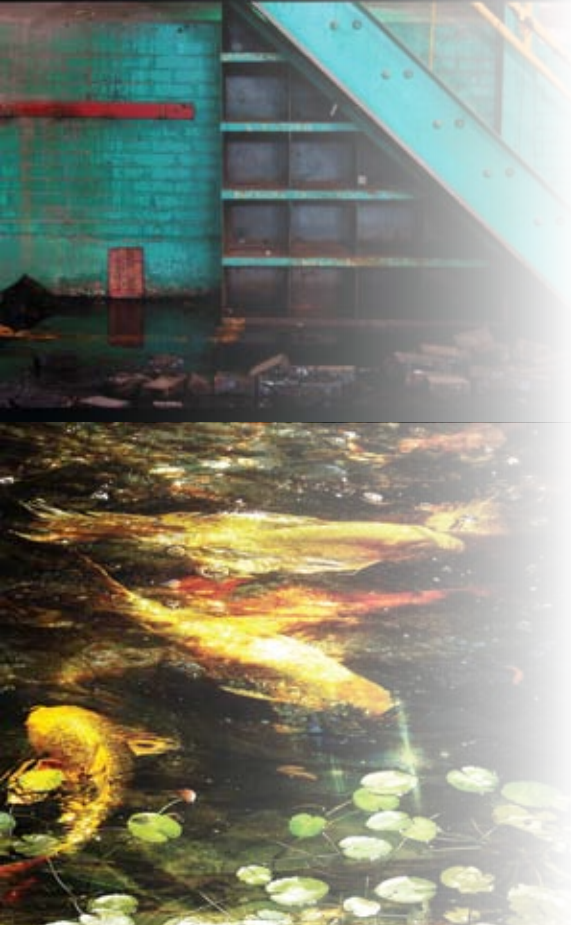
**Media and Specifications**

Students may enter 1-3 artworks. All media is eligible. Entries must be original work, completed in the last two years and not previously shown in KCAC Galleries. 2-D work must be framed and wired for installation; works on paper should be framed under plexiglas. Sculpture must not weigh over 150 lbs. If accepted, video artists must provide display equipment for the duration of the exhibition.

**To Enter**

The Artists Coalition is now using CaFÉ at [www.CallForEntry.org](http://www.CallForEntry.org) for show entries. The site will walk you through Image Preparation and the Application Form. Begin your image prep right away, you can save your portfolio and return to it at anytime.





### To Complete your registration you will need....

Image/s. Use good quality image/s (showing just the artwork, NO background); prepare the images according to the specifications at CaFé.

Register Online at [www.CallForEntry.org](http://www.CallForEntry.org) You can save your application and return to it until you complete it and submit it. There is no entry fee.

### Acceptance

Artists whose works are accepted will be notified beginning March 21, 2012. Notices will be made via the e-mail you use for your Café Registration; however, we must also have a telephone number where you can be reached on this date. KCAC reserves the right to reproduce accepted works for publicity, documentation and promotion of the exhibition. Students should not submit work needed for scholarship exhibitions.

### Delivery and Return of Work

Works must be hand delivered to Kansas City Artists Coalition on Friday or Saturday, April 6 or 7th between 11-4 p.m. Work must be picked up Saturday, April 28 between 11-4 p.m. If works are not picked up on April 28th KCAC will dispose of the work(s) in any way it sees fit without liability or further notice to the artist or lender.

### Sales

KCAC will take 30% commission on work sold from the exhibition. Price submitted must include KCAC commission and frame, if applicable.

### Liability and Agreement

KCAC provides insurance for the exhibition.

For more information call: 816/421-5222 or visit [www.KansasCityArtistsCoalition.org](http://www.KansasCityArtistsCoalition.org)

### About KCAC

The Kansas City Artists Coalition is a nonprofit artist-run organization that promotes visual arts awareness in Kansas City and the surrounding region, and supports the professional growth of its members.

Students may become members of KCAC online at [www.KansasCityArtistsCoalition.org](http://www.KansasCityArtistsCoalition.org) for only \$20. Artists' benefits include: link from KCAC website to artist's website, eligibility for exhibitions, including Underground and members only opportunities, 50% discount on seminars and programs offered by KCAC, invitations to exhibitions and events, invitation to Auction Sweetheart Reception, and copy of the River Market Regional Catalog.

*Artists selected for the 2011 Exhibition.*

*Pictured from top:*

Krystal Kuhn — Kansas City Art Institute

Vladimir Younger — Northwest Missouri State University

Samantha McPherson — Missouri State University

Leon Jones — Johnson County Community College

Lawrence Stitt — Metropolitan Community College

Linda Gaulding — Johnson County Community College

Dustin Downey — Kansas City Art Institute

*To see all 2011 artists goto:*

[http://www.kansascityartistscoalition.org/exhibitions/exhibitions\\_archive.html](http://www.kansascityartistscoalition.org/exhibitions/exhibitions_archive.html)



Kansas City Artists Coalition  
201 Wyandotte  
Kansas City, MO 64105  
816-421-5222  
[www.kansascityartistscoalition.org](http://www.kansascityartistscoalition.org)

